

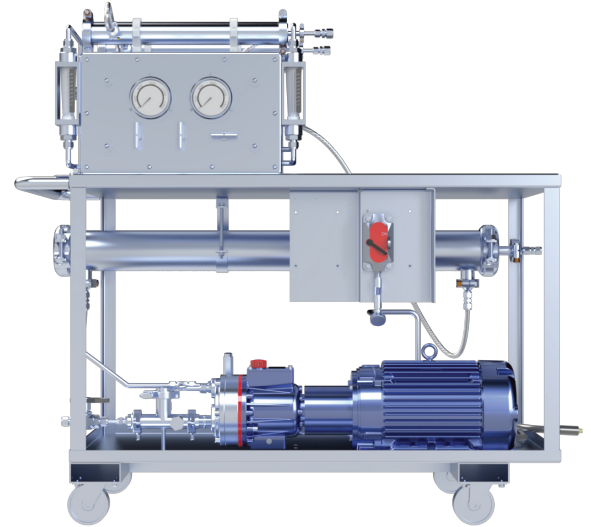
## Explosion-Proof Configured Pilot Skid

This Pilot Skid is equipped with explosion-proof electrical parts and chemically resistant wetted materials, exclusively designed to prioritize your safety. This feature provides additional protection when conducting membrane performance evaluations that require flammable or explosive organic solvents.

Conventional purification methods consist of multi-step processes but this Pilot Skid brings these processes down to a single filtration step, helping you to conserve valuable time and resources, while generating less waste. The skid also has adjustable system flow and pressure which allows precise control over your experiments.

### APPLICATIONS

- Organic solvent nanofiltration (OSN)
- Hemp and Cannabis purification
- Oil and gas applications
- Homogeneous catalyst recovery
- Non-thermal solvent recovery and management
- Natural oils processing (Dewaxing and enrichment)
- Pharmaceutical industry (Gentle active pharmaceutical ingredients concentration)
- Dialyze monomers and polymers in solvents (To separate unreacted monomers from the synthesized polymer)
- To separate the unwanted compounds/color from a product after a chemical reaction



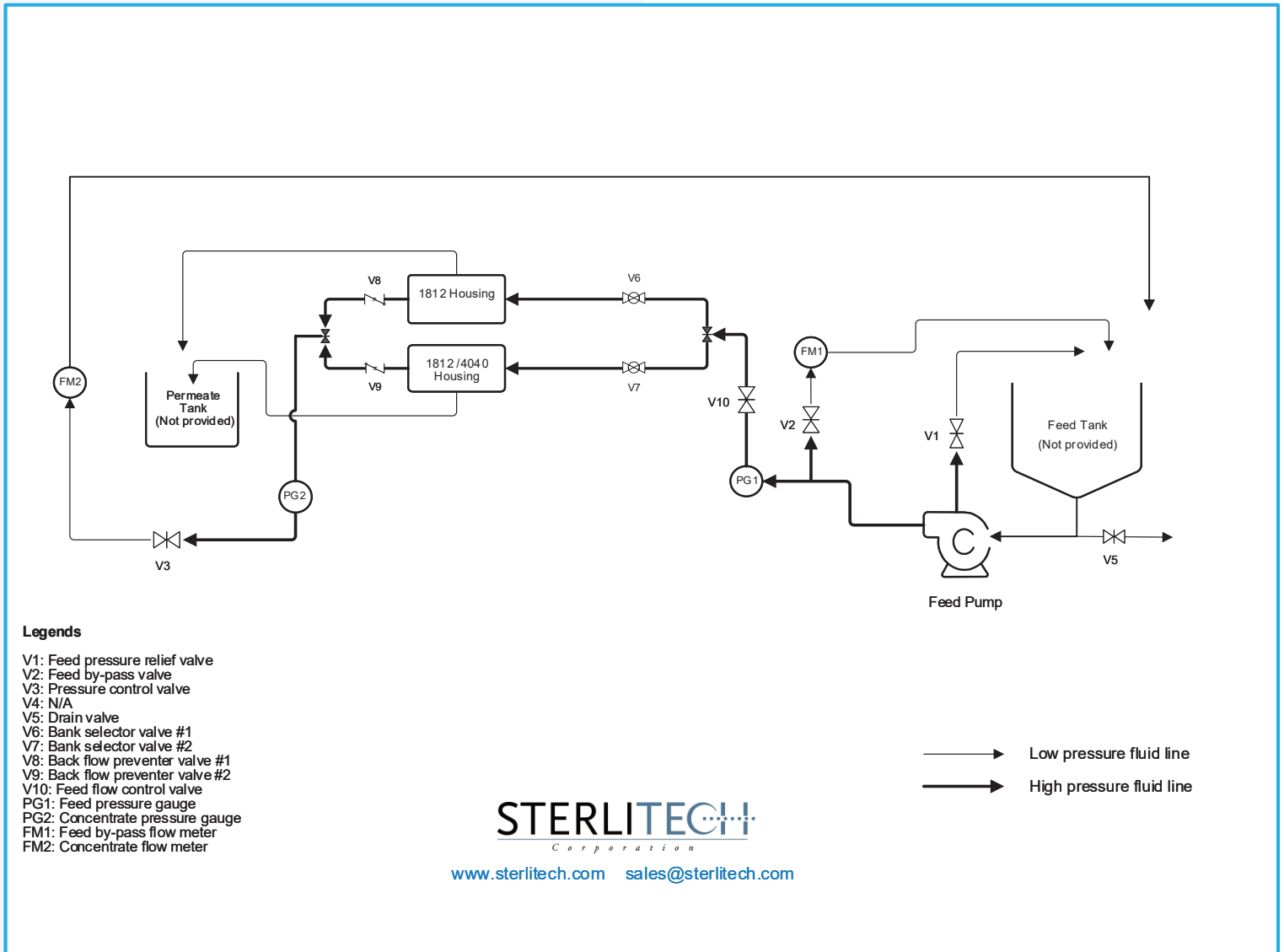
### Standard features of the Explosion-Proof Pilot Skid include:

- Two 1812 Stainless Steel 316 housings in parallel
- One 4040 Stainless Steel 316 housing
- Maximum system pressure of 870 psi (60 bar)
- Explosion-proof motor, switch, and wiring
- Stainless Steel 316; EPDM, Viton, v PTFE wetted parts\*
- Pressure gauges and flow meters
- Operates as 1 line or 2 lines in parallel

\*For chemical compatibility contact Sterlitech

## Explosion-Proof Configured Pilot Skid

### PROCESS AND FLOW DIAGRAM



# Explosion-Proof Configured Pilot Skid

## SPECIFICATIONS

<b>Housing Type</b>	1812 Housing, 870 psi (60 bar) Rated  4040 Housing, 1000 psi (69 bar) Rated
<b>Number of Housings</b>	2 or 3 Can be Customized with other Combinations of Housings
<b>Effective Membrane Area</b>	1.8 inch diameter and 40 inch length spiral wound element: Variable (max 0.45m <sup>2</sup> )  4 inch diameter and 40 inch length spiral wound element: Variable (max 5 m <sup>2</sup> )
<b>Feed Flow Rate</b>	Maximum 8.8 GPM (33.4 LPM), Feed Flow Controlled through Bypass
<b>Feed Controls</b>	Bypass Valve  Concentrate Pressure Control Valves: 0-1000 psi (0-69 bar)
<b>Data Monitoring</b>	Flow Rate, Pressure
<b>Electrical Supply</b>	230V 60Hz 3 Ph Power Input
<b>Pump and Motor Rating</b>	HydraCell D10 Pump: GPM Max 8.8 at 1000 psi (69 bar)  Leeson Explosion Proof Motor: 7.5 HP 3 Phase  Appleton Switch: 2-Pole, Amps 20, Voltage 120/277VAC
<b>Explosion Proofing</b>	Leeson Explosion Proof Motor: Rated for Class I, Division 1, Groups C and D.  Appleton Switch: UL Listed for Class I, Division 1 and 2, Groups C and D; Class II, Division 1 and 2, Groups E, F, and G; and Class III.  Wiring: Rated for Class I, Division 1.
<b>System Dimensions/Weight</b>	67 x 41 x 59 in (170 x 104 x 150 cm)  650 lbs. (295 kg)
<b>Optional Accessories</b>	Temperature Controller, Digital Balance