



ROCKER 440

AIR SUPPLY SYSTEM

PRODUCT MANUAL



1. IMPORTANT NOTICE

This instrument is designed for laboratory usage only.

Before setting up and operating the equipment, please read these instructions carefully to familiarize with all installation and operation process. Any individual shall be well trained by reading the instructions or by technical people from authorized distributors before operating the instrument.

The instrument shall not be modified or altered in any way. Any modification or alteration will void the warranty, void the regulatory certifications and create potential safety hazard. We are not responsible for any injury or damage caused by using the instrument for any non-intended purpose, or modifying the instrument by any person who is not authorized.

2. UNPACKING

When unpacking, notice if the equipment is in good situation. If not, please contact the distributor or contact us by e-mail: export@todays.com.tw immediately for assistance.

3. INSTALLATION

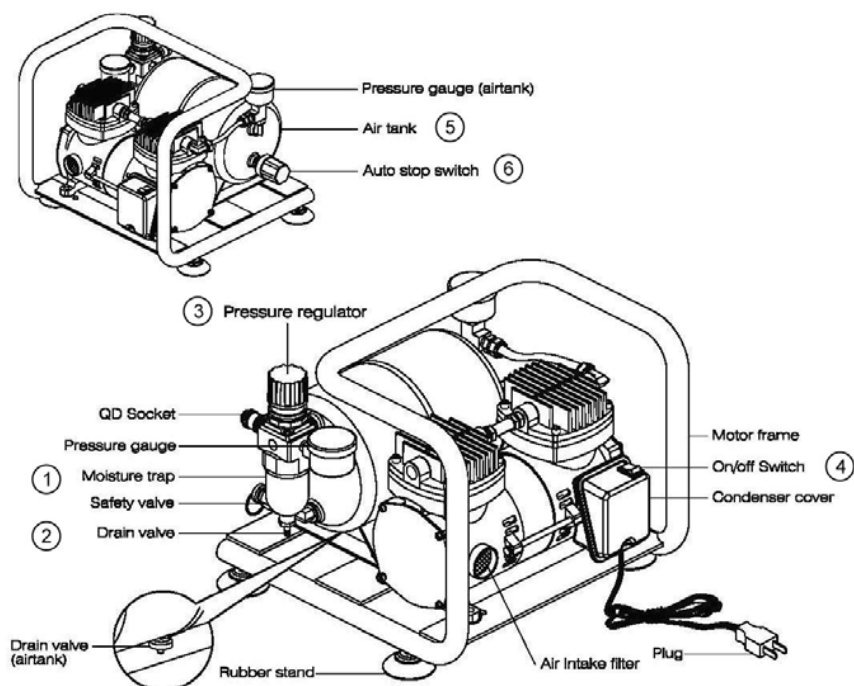
- Check voltage specified on name-plate on the bottom. Make sure if it matches the line voltage in your location.
- Install the instrument in a clean, dust-less and ventilated area under 40°C.

4. WARNING

- The equipment is not corrosion-proof. Please do not operate it in corrosive environment.
- The filter cartridge is used to absorb moisture and dust. Please replace the cartridge to maintain proper pumping efficiency when it is saturated.
- This compressor has a thermal switch that automatically shuts-off when it becomes overheated or lack of voltage.
- Do not touch the compressor during working or just after use as motor is hot. (70~80°C)
- Do not use any lubricant, which may damage the compressor.
- Use the compressor in a dry, clean well-ventilated area.
- Never spray flammable or toxic materials.
- If the supply cord is damaged, it must be replaced by the manufacturer, service agent or a competent person in order to avoid hazard.

5. OPERATION

- The system consists of a compressor Rocker 400, air tank and pressure regulator /moisture trap. Air is pumped into air tank by Rocker 400, then goes through pressure regulator/moisture trap. After regulating and filtrating, air goes to where you connect.
- Stain-less steel air tank possesses a Auto stop switch. It is set to turn on when pressure is lower than 40psi and off when pressure reaches 60psi.
- Air tank and moisture trap are built in a drain valve. Please open valve to drain the water away when water is accumulated in the air tank and moisture trap.



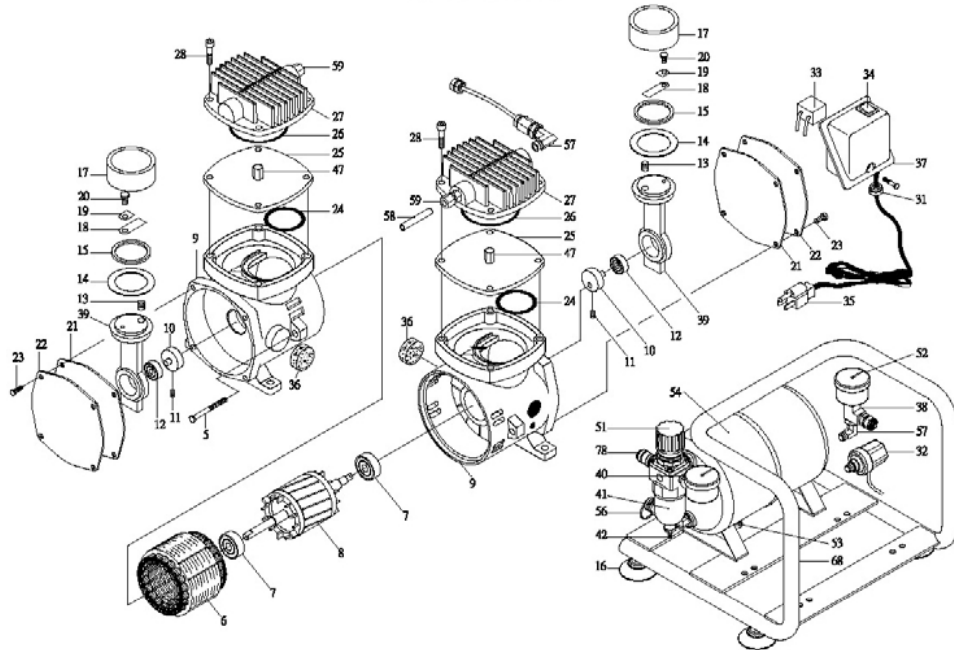
OPERATING PROCEDURE

- Schematic of the compressor system is shown as above.
- Once all of tubes have been connected, press on/off button to start the compressor.
- To set up pressure, adjust the regulator.

REPLACING A CARTRIDGE

- First, remove the moisture trap cup by rotating it counterclockwise.
- Remove the cartridge in the same way, then replace a new one.
- Pour the water out of the moisture trap cup when it is filled with water.

6. PARTS LIST



Index	Description	Q'ty	Index	Description	Q'ty
5	Set screw	2	10	Counterweight	2
6	Stationary Motor	1	11	Set screw	2
7	Bearing	2	12	Bearing	2
8	Rotary Motor	1	13	Mechanics Spring	2
9	Front Body	2	14	Compression Ring	2
15	Lock Plate	2	36	Air Intake Filter	2
16	Rubber Stand	4	37	Condenser Cover	1
17	Cylinder	2	38	3-way Connector	1
18	Valve Plate	2	39	Connecting Rod	2
19	Valve Plate Lock	2	40	Pressure Gauge 1 (airbrush)	1
20	Set screw	2	41	Moisture Trap	1
21	Paper Pad	2	42	Drain Valve	1
22	Front Body Lid	2	47	Check Plate	2
23	Set screw	8	51	Pressure regulator	1
24	O-ring	2	52	Pressure Gauge 2 (air tank)	1
25	Cylinder Block	2	53	Drain Valve	1
26	O-ring	2	54	Air Tank	1
27	Cylinder head	2	56	Safety Valve	1
28	Set screw	8	57	L-connector	3
31	Cable Protector	1	58	Interflow Tube	1
32	Auto Stop Switch	1	59	Interflow Union	2
33	Condenser	1	68	Motor Frame	1
34	On/Off Switch	1	78	QD Socket	1
35	Plug	1			

Founded in 2001 in Kent, WA, Sterlitech Corporation manufactures and markets filtration-focused laboratory products to a broad spectrum of scientific and industrial sectors. Its line of flat sheet membranes and tangential flow cells deliver industry-leading performance and reliable results. Configured for reverse osmosis, nanofiltration, ultrafiltration, and microfiltration applications, Sterlitech's bench scale test equipment provides the versatility required to innovate.

Sterlitech's comprehensive line of products is supported by the expertise of its technical specialists who can assist with application-specific product selection, and provide customized solutions where necessary. Unique problem-solving approaches, flexibility, and consistent quality have made Sterlitech Corporation a renowned global provider of filtration products and equipment.

General Corporate Information

Sterlitech Corporation

22027 70th Avenue S
Kent, WA 98032-1911 USA
Tel: 877-544-4420 or 1-253-437-0844
Fax: 1-253-437-0845

info@sterlitech.com

Sales Inquiries
sales@sterlitech.com

Accounts Payable
AP@sterlitech.com

Accounts Receivable
AR@sterlitech.com

Press Inquiries
PR@sterlitech.com

© 2018 Sterlitech Corporation
22027 70th Ave. S
Kent, WA 98032-1911 USA
Phone: (253) 437-0844
Fax: (253) 437-0845
Email: sales@sterlitech.com