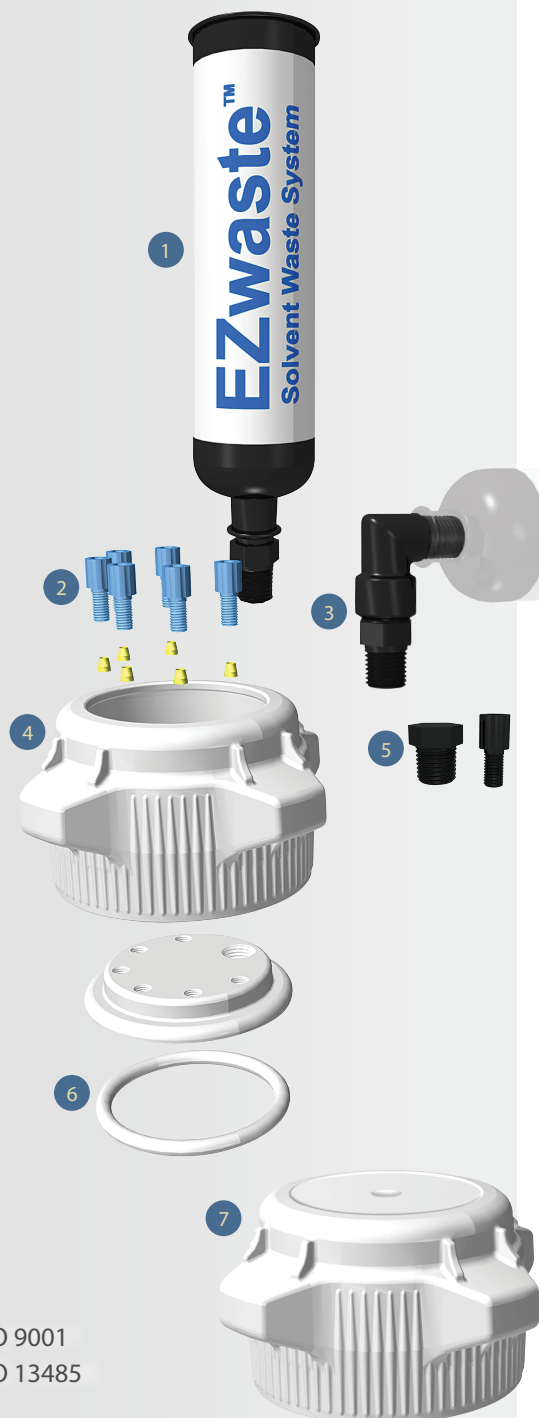




Sterlitech's EZ Waste™ Solvent Waste System is designed to be an affordable solution for liquid waste disposal. Each system is manufactured to safely collect waste from two HPLC systems and includes a 5 or 10L HDPE carboy, two 83B VersaCaps™ (one open top for waste collection and one closed top for safe transport), 4 ports for 3.2mm (1/8") OD waste tubes, 2 ports for 3.2mm (1/8") OD sensor tubes, 1 port for a carbon exhaust filter, 1 carbon exhaust filter and plugs for unused ports. The carbon exhaust filters reduce odor by capturing the vapors emitted from solvents.



The EZ Waste™ System attaches to the EZ grip™ Carboy allowing for safe transport to solvent collection room.

- 1 Carbon exhaust filter trap solvent vapors
- 2 Tube fittings secure waste tubes to carboy providing the closed system necessary to prevent spills
- 3 90° adapter included for maximum storage flexibility
- 4 VersaCap™ Technology eliminates need to remove tubing from open cap to install closed cap
- 5 Plugs included for unused ports
- 6 Replaceable sulfur cured EPDM gasket for high chemical compatibility against aggressive organic solvents
- 7 Closed 83B VersaCap™ included for safe transport
- 8 High Density Polyethylene EZgrip™ Carboy features advanced ergonomic design and superior chemical compatibility





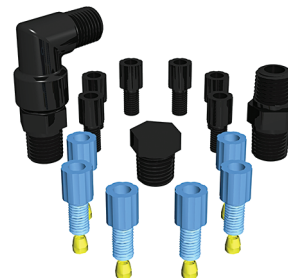
Item Number	Description	Carboy Size	Closure Size	Waste Ports	Sensor Ports
332-2412-OEM	HPLC Bundle with 5L HDPE Carboy (no spigot)	5L	83B	4 Ports for 3.2mm (1/8") OD Tubing	2 Ports for 3.2mm (1/8") OD Tubing
332-3412-OEM	HPLC Bundle with 10L HDPE Carboy (no spigot)	10L	83B	4 Ports for 3.2mm (1/8") OD Tubing	2 Ports for 3.2mm (1/8") OD Tubing
330-0901-OEM	Replacement Exhaust Filter	-	-	-	-
330-0902-OEM	Replacement Fittings	(6) 1/4-28 Nuts and Ferrule for 3.22mm (1/8") OD Tubing (6) 1/4-28 Plugs for Unused Ports (1) 1/4-18 MNPT Plug for Carbon Exhaust Port (1) Straight Adapter for Carbon Exhaust Filter (1) 90° Adapter for Carbon Exhaust Filter			



332-2412-OEM



332-3412-OEM



330-0902-OEM



330-0901-OEM